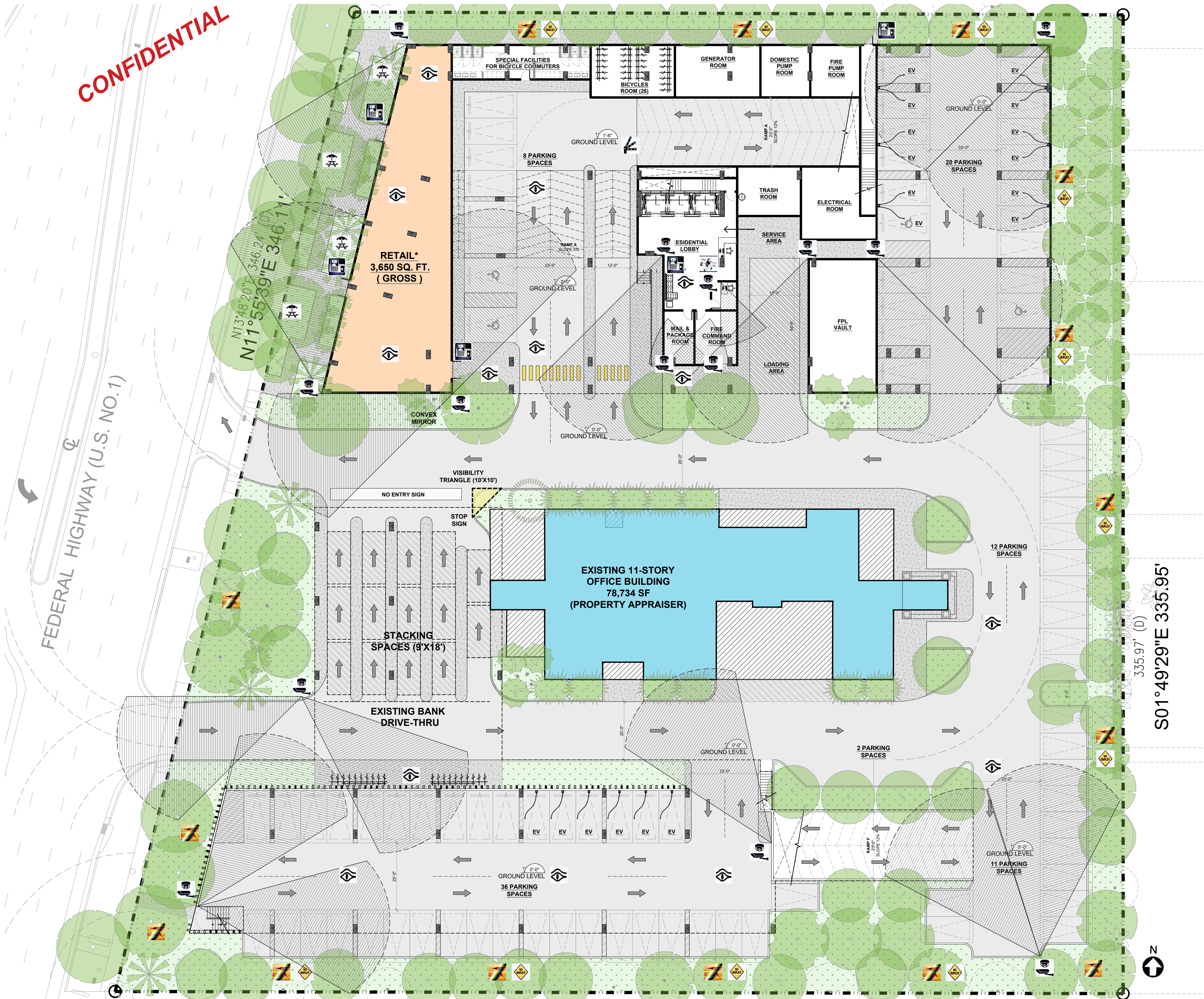


CONFIDENTIAL



#### NOTES :

- REFER TO SUBMITTED CPTED NARRATIVE FOR DISCUSSION ON HOW THE (8) CPTED PRINCIPLES ARE ACHIEVED FOR THIS PROJECT.
- THE PROPOSED DEVELOPMENT WILL NOT FEATURE LATE NIGHT BUSINESS.
- THE PROJECT WILL INCORPORATE A CCTV SECURITY SYSTEM. CAMERA LOCATIONS WILL BE DETERMINED BASED ON THE RECOMMENDATIONS OF THE SECURITY CONSULTANT AND CONSULTATION WITH THE BSO DURING THE BUILDING PERMIT REVIEW.
- SECURITY CAMERA LOCATIONS AND DIRECTION ARE APPROXIMATE AND ARE SUBJECT TO CHANGE. BUILDING PERMIT APPLICATION WILL BE SUBMITTED FOR INSTALLATION OF THE SECURITY SYSTEM. DETAILED PLANS SHOWING "CONE OF COVERAGE" SHALL BE PROVIDED AT THE TIME OF THE BUILDING PERMIT.
- 180 DEGREE WIDE ANGLE DOOR VIEWERS (PEEPOLES) &/ OR REINFORCED SECURITY WINDOWS WILL BE INSTALLED IN ALL RESIDENTIAL SOLID EXTERIOR UNIT DOORS TO ENABLE SCREENING OUTSIDE DOOR FOR SAFE EXITING. GLAZED OPENINGS WILL BE PROVIDED AT ALL COMMON AREA ENTRY DOORS. REFER TO ARCHITECTURAL PLANS FOR DETAILS.
- ANY EXTERIOR ELECTRICAL POWER OUTLETS AND ANY PERIMETER OR BUILDING FACADE WATER SERVICE SPIGOTS WHICH ARE LOCATED IN UNSECURED PUBLIC ACCESS AREAS WILL HAVE A LOCK AND/OR POWER SECURE INTERNAL CUT OFF SWITCH TO DENY UNAUTHORIZED USE OR ROBUST LOCKING CAP OR LOCKABLE COVERS.
- CLEAR SIGHT VIEWS, ACTIVITY NODES, AND PROPERTY MAINTENANCE WILL PROVIDE NATURAL SURVEILLANCE AND POLICING OF THE ADJACENT AREAS, INCLUDING THE PUBLIC SIDEWALKS, STOREFRONTS WINDOWS WILL NOT BE OBSTRUCTED, AND CLEAR VIEWS WILL BE MAINTAINED TO THE EXTERIOR AT ALL TIMES.
- REFER TO LANDSCAPE PLANS FOR PROPOSED LANDSCAPE TYPE, NAMES, QUANTITIES, AND MAINTENANCE NOTES.
- ALL HEDGES, BUSHES, LOW PLANTS, AND GROUND COVER SHALL BE MAINTAINED AT A MAXIMUM 30" HEIGHT (REFER TO LANDSCAPE PLANS FOR ADDITIONAL DETAILS AND MAINTENANCE NOTES).
- CANOPY TREES AND PALMS SHALL BE MAINTAINED WITH AN 8" CLEAR TRUNK (REFER TO LANDSCAPE PLANS FOR ADDITIONAL DETAILS AND MAINTENANCE NOTES).
- BROWARD COUNTY "NO TRESPASS" SIGNAGE, PER BROWARD COUNTY NO TRESPASS PROGRAM, SHALL BE PLACED AT THE MAIN ENTRANCE AND AROUND THE COMMON AREAS OF THE SITE. SIGNS SHALL BE POSTED IN CLEAR VIEW AND FASTENED SECURELY AT ALL CORNERS.
- PROJECT WILL INCLUDE MOTION SENSOR SECURITY LIGHTING OVER OR AT ALL EXTERIOR BUILDING FACADE DOORS SUCH AS SERVICE DOORS, PARKING LOT ACCESS, EXIT HALLWAYS, ETC.

A. SAFETY & SECURITY REVIEWS DO NOT GUARANTEE A CRIME WILL NEVER OCCUR; IT IS AN EFFORT TO MITIGATE OPPORTUNITIES FOR CRIME & TO HELP AVOID ANY PRESENT & FUTURE SECURITY DEFICIENCIES, CONFLICTS, THREATS, BREACHES, OR LIABILITIES THAT MIGHT OCCUR WITHOUT ANY REVIEW.

B. WHEN A BROWARD SHERIFFS OFFICE CPTED PRACTITIONER IS REQUIRED TO ASSIST IN AN INSPECTION OF THE PROJECT DURING THE CERTIFICATE OF COMPLETION &/OR CERTIFICATE OF OCCUPANCY APPLICATION PHASE, SECURITY STRENGTHENING & CPTED MEASURES THAT HAVE NOT BEEN ADEQUATELY ADDRESSED WILL STILL BE REQUIRED TO ENSURE THE SAFETY & WELL-BEING OF THE EMPLOYEES, RESIDENTS, TENANTS, VISITORS & ALL LEGITIMATE USERS OF THE SITE.

C. PLEASE NOTE THAT PARTICIPATION IN THE BSO NO TRESPASSING PROGRAM IS REQUIRED. IF THIS SITE IS ALREADY ON THE PROGRAM, THEN ADDITIONAL SIGNAGE MAY BE NECESSARY ALONG WITH AN UPDATED AFFIDAVIT SIGNED BY AUTHORIZED PERSONNEL. PLEASE CONTACT THE BSO POMPANO BEACH C.P.T.E.D ADVISOR REGARDING PLACEMENT OF THE NO TRESPASS SIGNS.

D. ACTIVITY SUPPORT SECURITY STRENGTHENING

1) PUBLIC, VISITOR &/OR COMMON USE RESTROOMS, STORAGE ROOMS, LOCKER ROOMS, FITNESS ROOMS, SAUNAS, ETC. (IF ANY) MUST BE EQUIPPED WITH EITHER CONSTANT LIGHTING &/OR A SECURED MOTION SENSOR LIGHTING SYSTEM THAT WILL PROVIDE IMMEDIATE ILLUMINATION UPON ENTRY.

2) FOR PROJECTS WITH MULTIPLE STAIRWELLS, EACH STAIRWELL MUST BE PROMINENTLY IDENTIFIABLE WITH WAYFINDING SIGNAGE, PREFERABLE BY NUMBER OR LETTER, TO HELP EXPEDITE RESPONSE TIMES FOR EMERGENCY PERSONNEL (POLICE, FIRE RESCUE, SECURITY, MANAGEMENT STAFF) IN CASE OF POSSIBLE CRISIS EVENTS WITHIN THE BUILDING.

#### CPTED LEGEND



SURVEILLANCE NATURAL (SN)

SURVEILLANCE ELECTRONIC (SE)

ACCESS CONTROL - NATURAL (ACN)

ACCESS CONTROL - PHYSICAL (ACP)

ACCESS CONTROL - ELECTRONIC (ACE)

TERRITORIAL REINFORCEMENT (TR)

MAINTENANCE (M)

ACTIVITY SUPPORT (AS)

NOTE: PLEASE REFER TO THE CPTED SECURITY NARRATIVE PLAN FOR ADDITIONAL INFORMATION.

CONFIDENTIAL

#### CPTED:

#### (CRIME PREVENTION THROUGH ENVIRONMENTAL DESIGN)

#### SECURITY NARRATIVE PLAN

CPTED IS A CRIME PREVENTION METHOD WHICH HAS BEEN SHOWN TO REDUCE OPPORTUNITIES FOR CRIME AND INCIVILITY. IT PROVIDES POSITIVE COMMUNITY SAFETY BENEFITS BY IMPROVING PLANNING AND DESIGN DECISIONS IN WAYS THAT PROVIDE ORGANIZATIONS, COMMUNITIES AND BUSINESSES WITH PRACTICAL CRIME PREVENTION TOOLS. THIS IMPLEMENTATION GUIDE WAS DEVELOPED TO INCORPORATE THE PRINCIPLES OF CPTED IN THE PREPARATION, REVIEW AND IMPLEMENTATION OF PLANNING SCHEMES AND POLICIES.

THE CPTED PRINCIPLES OUTLINED AND DISCUSSED IN THESE GUIDELINES CANNOT BE RULES OR UNIVERSAL SOLUTIONS FOR EVERY SITUATION. INSTEAD THEY FOCUS ATTENTION ON KEY ISSUES TO CONSIDER IN RELATION TO THE NEEDS OF EACH LOCAL SETTING. FOR FURTHER INFORMATION ON THE KEY PRINCIPLES OF CPTED AND SPECIFIC EXAMPLES OF CPTED APPROACHES IN PARTICULAR AREAS, PLEASE REFER TO: CPTED SECURITY DRAWING PLAN (A901).

#### OUTCOME/OBJECTIVE

INCIDENTS, OPPORTUNITIES, AND FEAR OF CRIME ARE PREVENTED OR REDUCED BY ENSURING THAT CRIME PREVENTION THROUGH ENVIRONMENTAL DESIGN (CPTED) PRINCIPLES ARE UNDERSTOOD AND INTEGRATED INTO THE PROJECT. THE GOAL IS TO USE DESIGN, PLANNING, MANAGEMENT AND USE OF SPACE TO INCORPORATE CPTED THROUGHOUT.

#### SURVEILLANCE: NATURAL (SN)

NATURAL SURVEILLANCE IN THE PROJECT WOULD BE PRESENT THROUGHOUT. BY IMPLEMENTING A WIDE VARIETY OF WINDOWS AND OPENINGS, THE OCCUPANTS HAVE VIEWPOINTS AND SITE LINES OVERLOOKING THE KEY AREAS OF THE BUILDING. KEY POINTS INCLUDE, BUT ARE NOT LIMITED TO PATHWAYS, STAIRS, ENTRANCES, EXITS, AND EXTERIOR/INTERIOR PARKING AREAS. LIGHT DISCOURAGES CRIMINAL ACTIVITY, ENHANCES NATURAL SURVEILLANCE OPPORTUNITIES, AND REDUCES FEAR. ALONG WITH NATURAL/ARTIFICIAL LIGHTING, THE TRANSPARENT NATURE OF THE PROJECT ALLOWS FOR THE USERS TO EASILY MONITOR ACTIVITIES WITHIN AND AROUND THE BUILDING, WHILE MINIMIZING BLIND SPOTS. PROJECT WILL INCLUDE WIDE ANGLE VIEWERS (PEEPOLES) &/ OR REINFORCED SECURITY WINDOWS IN ALL SOLID EXTERIOR UNIT DOORS TO ENABLE SCREENING OUTSIDE DOOR FOR SAFE EXITING. FOLLOW CPTED STANDARD LANDSCAPING, MAXIMUM HEIGHT 2.5' FEET GROUND COVER/ HEDGES, AND MINIMUM 8' FEET CLEAR TRUNK ON CANOPY TREES (6" DIAMETER TRUNK AND GREATER). PROJECT WILL ALSO INCLUDE MOTION SENSOR SECURITY LIGHTING OVER OR AT ALL EXTERIOR BUILDING FACADE DOORS SUCH AS SERVICE DOORS, PARKING LOT ACCESS, EXIT HALLWAYS, ETC. SITE & GARAGE LIGHTING WILL BE TAMPER & VANDAL PROOF + LIGHTING WILL BE PLACED ENSURING THAT ANY POTENTIAL CONCEALMENT OR AMBUSH POINTS WILL BE ELIMINATED

#### SURVEILLANCE: ELECTRONIC (SE)

ELECTRONIC SURVEILLANCE IS A KEY STRATEGY THAT WOULD BE IMPLEMENTED IN THIS PROJECT. WITH THE USE OF CCTV CAMERAS PLACED IN STRATEGIC POSITIONS, THE ABILITY TO MONITOR ACTIVITIES IN THE FACILITY WILL GIVE A GREATER SENSE OF SECURITY. THESE CAMERAS MAY BE ACCESSED REMOTELY, BUT WILL ALSO HAVE A LOCATION ON SITE IN ORDER TO OBSERVE THE INTERIOR AND EXTERIOR SPACES THROUGHOUT. WHETHER IT IS EMPLOYEES, CUSTOMERS, OR CRIMINALS, THIS STRATEGY WOULD ULTIMATELY DETER THEFT, VANDALISM, AND OTHER UNLAWFUL ACTIVITY. ON-SITE MONITOR WILL BE LOCATED & SEEN IN THE LOBBY BY A FRONT DESK PERSON / RECEPTION DESK WHERE THE SECURITY CAMERA LOCATIONS ARE TO BE COORDINATED BY A SECURITY CONSULTANT AT THE TIME OF BUILDING PERMIT (SEE NOTES #3 AND #4).

#### ACCESS CONTROL: NATURAL (ACN)

NATURAL ACCESS CONTROL CAN BE SEEN IN VARIOUS FORMS AND THE GOAL IS TO CLEARLY DIFFERENTIATE BETWEEN PUBLIC SPACES AND PRIVATE SPACES. POINTS THAT REINFORCE NATURAL ACCESS CONTROL INCLUDE THE SURFACE TREATMENT AND LOCATION OF GRASS, PAVEMENT, AND SIDEWALK WHICH DEFINE THE PUBLIC FROM THE PRIVATE SPACES. ALSO THE DESIGN IMPLEMENTS A STRATEGIC LOCATION OF ENTRANCES (PRIMARY/SECONDARY), EXITS, FENCING, LANDSCAPING AND LIGHTING WOULD SUBTLY DIRECT BOTH FOOT AND VEHICULAR TRAFFIC IN WAYS THAT DECREASES CRIMINAL OPPORTUNITIES. WITH FEATURES THAT INCLUDE ADEQUATE LOCKS, WINDOW BARRIERS, AND A NATURAL BOUNDARY, THE CONTROL OF ACCESS IS DEFINED. EMERGENCY ACCESS WILL BE PROVIDED TO LAW ENFORCEMENT. PARKING GARAGE WILL BE EQUIPPED WITH AN OVERHEAD PIVOTING GATE WITH FOB CONTROL TO ALL RESIDENTS. THE PROJECT WILL FEATURE A SMART CARD READER. NEVERTHELESS, LANDSCAPING WILL NOT BE BUTTING UP CLOSE TO BOUNDARY GUARDRAILS WHICH WOULD ALLOW CONCEALMENT/ AMBUSH OPPORTUNITIES. NEVERTHELESS, THE GUARDRAILS ARE ALSO INTENDED TO BE AN ALUMINUM GLASS RAILING SYSTEM (CLEAR GLASS), WHICH IS ALSO DESIGNED TO PREVENT EASY CLIMBING / BREACHING.

#### ACCESS CONTROL: PHYSICAL (ACP)

PHYSICAL ACCESS CONTROL IS ONE OF THE MOST CRUCIAL POINTS IN CREATING A SAFE ENVIRONMENT FOR THIS PROJECT. EXAMPLES THAT INCLUDE PHYSICAL ACCESS CONTROL ELEMENTS INCLUDE BOLLARDS, GATES, RAMP, TRAFFIC SPIKES. BOLLARDS WILL BE PLACED THROUGHOUT THE FACILITY IN ORDER TO KEEP VEHICLES FROM ENTERING OR EXITING WITHOUT PERMISSION. GATES AND RAMP WILL BE PLACED AT ENTRY POINTS AND EXITS IN ORDER TO CONTROL THE CIRCULATION AND ACCESS OF PEOPLE AND VEHICLES. TRAFFIC SPIKES WILL BE PLACED AT VEHICULAR ENTRY/EXIT POINTS IN ORDER TO DETER THEFT BY PREVENTING VEHICLES FROM LEAVING THE FACILITY (PARKING CONTROL), DOORS, FENCES, AND OTHER PHYSICAL ELEMENTS IN KEY LOCATIONS ARE ALSO IMPLEMENTED IN ORDER TO KEEP UNAUTHORIZED PERSONS OUT OF A PARTICULAR PLACE IF THEY DO NOT HAVE A LEGITIMATE REASON FOR BEING THERE. BOLLARDS WILL BE STRATEGICALLY LOCATED SUCH AS IN PEDESTRIAN/ VEHICLE PICK UP AREA OUT IN FRONT OF LOBBY FOR EXAMPLE. ANY PUBLICLY ACCESSIBLE EXTERIOR PERIMETER OR BUILDING FACADE WATER SERVICE SPIGOTS & ELECTRICAL SERVICE OUTLETS WILL BE EQUIPPED WITH AN INTERNAL CUTOFF OR ROBUST LOCKING CAP OR LOCKABLE COVERS (SEE NOTE #6).

#### ACCESS CONTROL: ELECTRONIC (ACE)

THE PROJECT WILL BE EQUIPPED WITH ELECTRONIC ACCESS CONTROL WOULD INCLUDE SYSTEMS THAT WOULD INCREASE THE SECURITY OF PARTICULAR SPACES THAT REQUIRE AUTHORIZATION. A BUILDING SECURITY SYSTEM WILL BE USED WHEN THE FACILITY AT ALL TIMES. THIS ALARM SYSTEM WILL INCLUDE MONITORING, MOTION DETECTION, AND IMMEDIATE NOTIFICATION TO THE LOCAL AUTHORITIES SHOULD A PROBLEM ARISE. SECONDARY SYSTEMS INCLUDE ACCESS CODES/CARDS IN ORDER FOR EMPLOYEES TO ENTER PARTICULAR SPACES (PRIVATE) THAT ARE NOT INTENDED FOR PUBLIC USE. EX-EMPLOYEES, FORMER CONTRACTORS, ANY UNAUTHORIZED PERSONS, ETC., WILL BE IMMEDIATELY REMOVED FROM ANY ACCESS PERMISSIONS. BOLLARD WILL BE PROVIDED FOR PEDESTRIANS IN FRONT OF LOBBIES BETWEEN DRIVING LANES OR PARKING SPACES. (SEE MARKUPS ON PLANS).

#### TERRITORIAL REINFORCEMENT (TR)

TERRITORIAL REINFORCEMENT PROMOTES SOCIAL CONTROL THROUGH INCREASED DEFINITION OF SPACE AND IMPROVED PROPRIETARY CONCERN. THE IMPLEMENTATION OF SIGNAGE AT KEY POINTS WILL ADDRESS THIS PRINCIPLE. EXAMPLES MAY INCLUDE "NO TRESPASSING" SIGNS ALONG WITH SECURITY SYSTEM SIGNAGE NEAR ACCESS ZONES. THE SECURITY CAMERAS WILL ALSO FUNCTION AS TERRITORIAL REINFORCEMENT ELEMENTS BY DETERRING CRIMINAL ACTIVITY. TERRITORIAL REINFORCEMENT IS ALSO EXPRESSED FROM PREVIOUS PRINCIPLES BY USING BUILDINGS, FENCES, PAVEMENT, SIGNS, LIGHTING AND LANDSCAPE TO EXPRESS OWNERSHIP AND DEFINE THE PUBLIC, SEMI-PUBLIC AND PRIVATE SPACES. ENROLLMENT IN THE BSO TRESPASS PROGRAM IS REQUIRED. DEMONSTRATION THAT A SUFFICIENT AMOUNT OF AUTHORIZED LEGAL SIGNAGE IS PROPERLY POSTED THROUGHOUT THE PROPERTY WITH THE GUIDANCE OF A BSO DEPUTY (SEE NOTE #11).

#### MAINTENANCE (M)

MAINTENANCE WILL BE HANDLED BY PERSONNEL (JANITOR, LANDSCAPE COMPANY, ETC) APPOINTED BY THE OWNER TO CARRY OUT RELATIVE TASKS. MAINTENANCE AND MANAGEMENT HAVE BEEN CONSIDERED THROUGHOUT THE DESIGN PHASE WITH THE CAREFUL SELECTION OF BUILDING MATERIALS AND FINISHES. THERE ARE ALSO ROOMS FOR THE JANITOR, BACK-UP POWER GENERATORS AS WELL AS STORAGE AREAS IN ORDER TO ENABLE FUNCTIONALITY AND EFFICIENCY FOR THE FACILITY. ULTIMATELY, THE PRINCIPAL OF HAVING GOOD MAINTENANCE PORTRAYS A GREATER SENSE OF OWNERSHIP AND IMAGE.

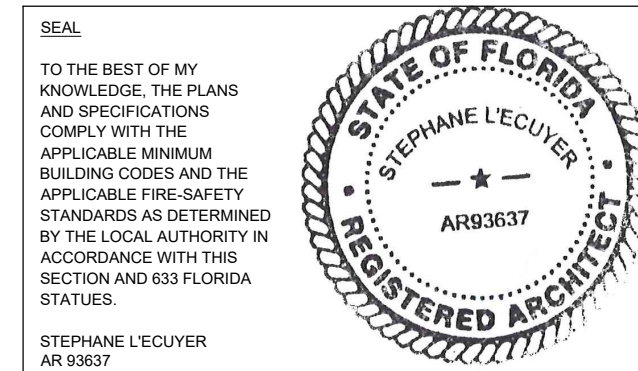
#### ACTIVITY SUPPORT (AS)

ACTIVITY SUPPORT INCREASES THE USE OF A BUILT ENVIRONMENT FOR SAFE ACTIVITIES WITH THE INTENT OF INCREASING THE RISK OF DETECTION OF CRIMINAL AND UNDESIRABLE EVENTS. ACTIVITY SUPPORT WILL BE PRESENT IN PARTICULAR AREAS OF THE FACILITY AS DESIGNATED PUBLIC AREAS FOR SEATING, WAITING, ETC. WILL BE PROVIDED. APPROPRIATELY LOCATED NEAR THE MAIN ENTRANCE OF THE BUILDING, THERE ARE BENCHES AND SEATS FOR CUSTOMERS AND EMPLOYEES ALIKE. THERE WILL ALSO BE A VEHICLE DISPLAY NEAR THE FRONT ENTRY TO FURTHER EMPHASIZE ACTIVITY IN THIS SPACE. TO ALLOW FOR PUBLIC OUTDOOR SPACES INTENDED FOR THE USE OF THE CUSTOMERS, THIS PRINCIPLE REINFORCES THE NATURAL SURVEILLANCE (SN) AS WELL AS THE ACTIVITY SUPPORT (AS) OF THE BUILDING. SINGLE SEATING WILL BE PROVIDED ON ANY EXTERIOR PUBLICLY ACCESSIBLE BENCHES TO DETER UNWANTED LOITERING SUCH AS VAGRANTS TRESPASSING WHO USE THEM FREQUENTLY FOR LYING DOWN TO SLEEP, CONSUME ALCOHOL, ETC. (SEE MARKUPS ON PLANS).



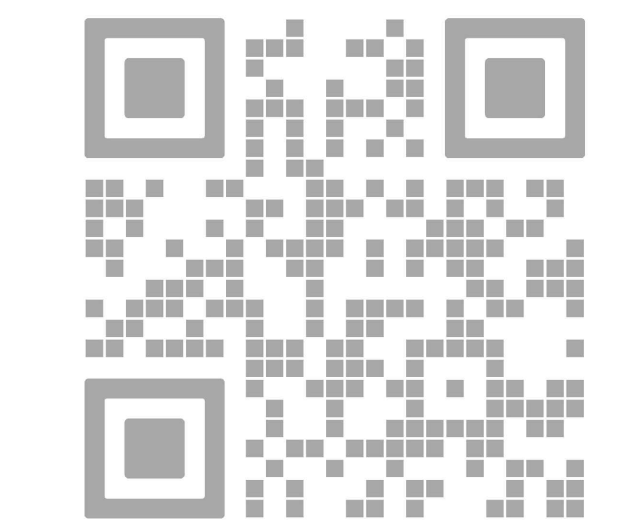
absolute-idea.com

CANAL PARK  
3523 NE 163rd Street, Suite 200 North Miami Beach, FL 33160  
T 305.792.0015 F 305.931.0279 @info@absolute-idea.com



ISSUE FOR:

DRC SUBMITTAL



REV.	DATE	DESCRIPTION
01	05-13-2025	DRC SUBMITTAL

ALL MEASUREMENTS MUST BE VERIFIED BEFORE BEGINNING THE WORK. NO MEASUREMENTS ARE TO BE SCALED DIRECTLY FROM THIS DRAWING.

Key section

Client

**VERA FUND**  
NICK POLYUSHKIN  
& YURI KHARITONENKOV  
TEL: 305.833.3303

Project

**1600 S FEDERAL HIGHWAY  
(MIXED-USE PROJECT)**  
**1600 SOUTH FEDERAL HIGHWAY,  
POMPANO BEACH, FL 33062**

Title

**CPTED SITE PLAN**

Drawn

**J. WU**

Field  
**ARCHITECTURE**

Verified

**N. TREMBLAY**

Scale  
**as shown**

Approved

**S. L'ECUYER**

Date  
**01-19-2026**

Project Manager

**J. WU**

Dwg. no.  
**A-081**

Project

**24-838**

01 CPTED SITE PLAN  
A-081 SCALE: 1"= 20'-0"